

INSTALLATION MANUAL

13492

Level of Difficulty

Moderate

Installation difficulty levels are based on time and effort involved and may vary depending on the installer level of expertise, condition of the vehicle and proper tools and equipment.

Weight Carrying Capacity

Gross trailer weight (GTW)	3,000 lbs.
Tongue weight (TW)	300 lbs.

Parts List

Item	Qty	Description
1	7	Hex bolt, M8
2	7	Conical-toothed washer, 3/8"

Tools Required

Torque wrench	Torx bit, T15, T25
Socket, 13mm	Ratchet
Socket extension, 6"	Panel trim removal tool

* For a tools reference guide visit curtmfg.com/trailer-hitch-installation

⚠ WARNING

Never exceed the vehicle manufacturer's recommended towing capacity.

Product Photo



NOTICE

Visit www.curtmfg.com for a full-color copy of this instruction manual, as well as helpful videos, guides and much more!

Before you begin installation, read all instructions thoroughly.

Proper tools will improve the quality of installation and reduce the time required.

Periodic inspection of the trailer hitch should be performed to ensure all mounting hardware remains tight and structural components are secure.

To help prevent damage to the product or vehicle, refer to the specified torque specifications when securing hardware during the installation process.

SAFETY INSTRUCTIONS

Safety glasses should be worn at all times while installing this product.

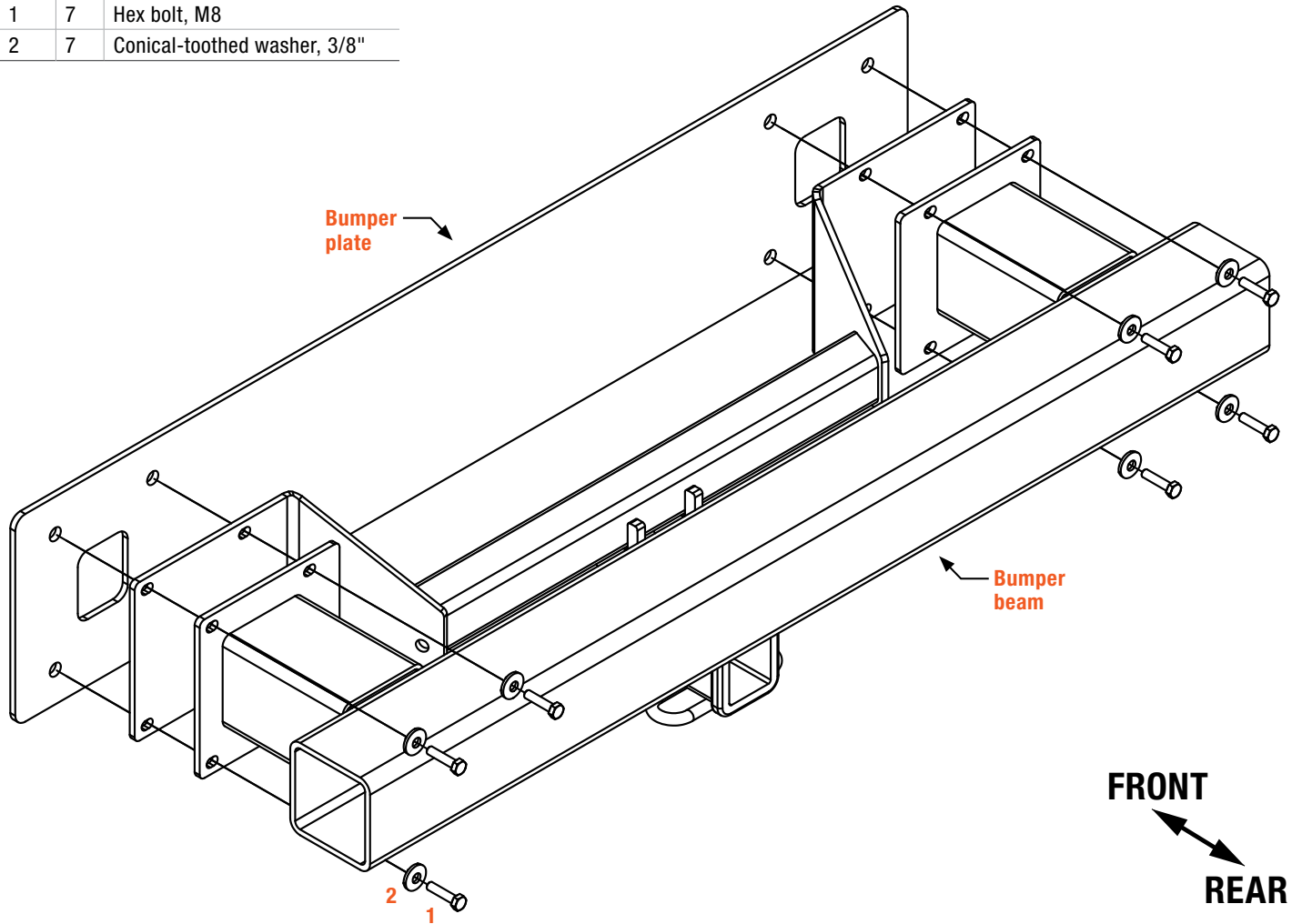
Product Registration and Warranty

CURT stands behind our products with industry-leading warranties. To get copies of the product warranties, register your purchase or provide feedback, visit: warranty.curtgroup.com/surveys

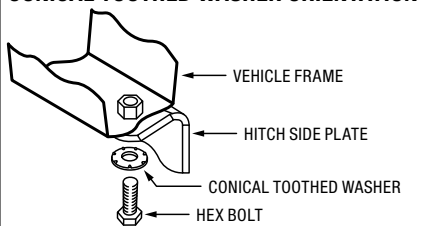
ASSEMBLY

Parts List

Item	Qty	Description
1	7	Hex bolt, M8
2	7	Conical-toothed washer, 3/8"



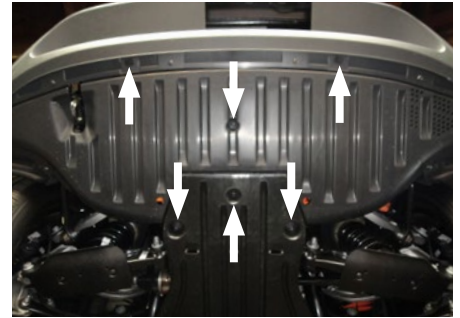
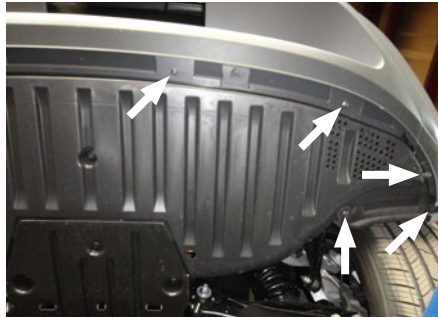
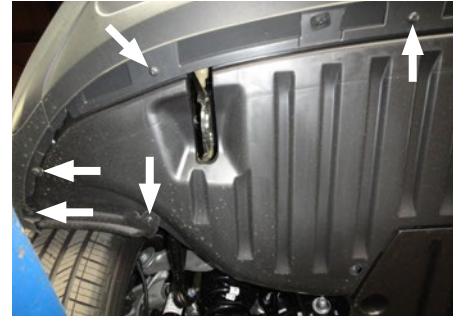
CONICAL TOOTHED WASHER ORIENTATION



Step 1

Remove thirteen screws from the vehicle underbody panel using a T-25 torx bit. Remove two retainer-style fasteners from the lower fascia panel using a T-15 torx bit. Remove one push-style fastener that secures the rear underbody panel to additional underbody protective panels.

Once all fasteners are removed, carefully lower the underbody panel and set off to the side for re-installation.



Step 2

Use a T-25 torx bit to remove the screws from the rear fascia panel, one on each side of the rear lift gate below each taillight. Use a panel trim removal tool to remove the black plastic taillight cover located next to the taillight. Remove the two screws from the rear driver-side wheel well using a T-25 torx bit.

Repeat this step on the passenger side of the vehicle. Remove the rear license plate (if equipped) and set aside for re-installation. Remove two screws from the space located behind the license plate location using a T-25 torx bit.

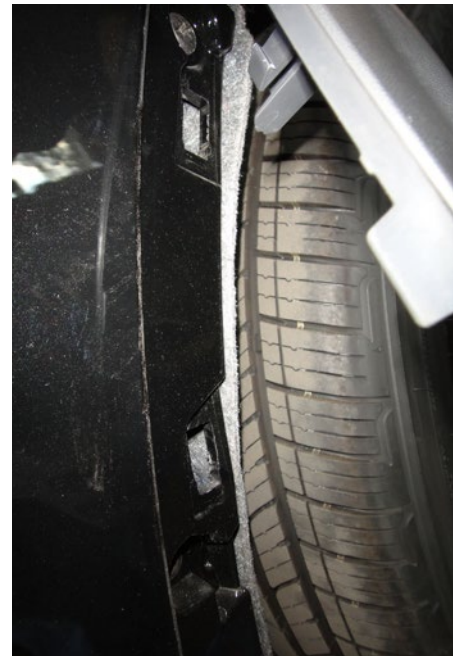


Step 3

Carefully separate the wheel well trim, starting from the rearward-most part of the wheel well, working upward.

Note: Depressing / compressing clips from the backside of the wheel well trim will assist in separating the trim piece. Total wheel well trim removal isn't required.

Use a T-25 torx bit to remove the two fasteners from under each wheel well trim piece securing the fascia panel in place. Repeat this step on both sides of the vehicle.



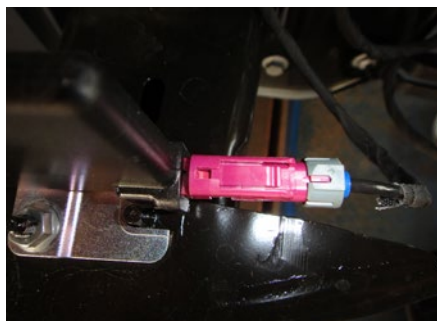
Step 4

Begin to remove the fascia panel, starting at the wheel wells, by applying pressure to the separate plastic retaining clips securing the fascia panel in place. Disconnect the electrical wiring from the bumper fascia and set the fascia aside.



Step 5

Disconnect the electrical connection from the bumper beam. Remove the seven bolts securing the bumper beam to the vehicle using a 13 mm socket. Remove the bumper beam and set off to the side for reinstallation.



Step 6

Raise the hitch and bumper beam into position and secure with the supplied M8 hex bolts (#1) and 3/8" conical-toothed washers (#2). Torque hardware to 23 ft-lbs.

Reconnect the electrical to the bumper beam.

Note: You may need to bend the small bumper beam hang tabs on each end of bumper beam flat during reinstallation.



Step 7

Reinstall the bumper fascia. The receiver tube will pass through the cutout below the license plate location in the bottom of the fascia panel. During reinstallation of the fascia, be sure to reconnect all electrical connections.



Step 8

Reinstall all screws and fasteners that secure the bumper fascia, underbody panel and wheel trims. Be sure to reinstall the license plate (if equipped).

Final Installed Image

